



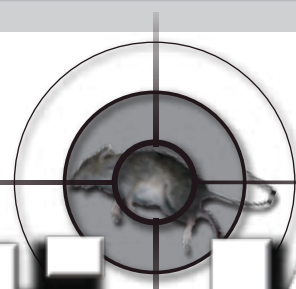
NET CONTENTS: 18 POUNDS
(288 x 1 OZ. blocks)

MULTI-KILL[®]

BRAND

BLOCKS II

Kills Norway Rats, Roof Rats and House Mice



KEEP OUT OF REACH OF CHILDREN.
CAUTION: See side panel for additional precautionary statements.

ACTIVE INGREDIENT:0.005%
Difenacoum0.005%
OTHER INGREDIENTS:99.995%
TOTAL:100.00%

DIRECTIONS FOR USE:

It is a violation of federal law to use this product in a manner inconsistent with its labeling.

READ THIS LABEL: Read this entire label and follow all use directions and use precautions. Use only for the sites, pests, and application methods described on this label.

IMPORTANT: Do not expose children, pets, or non-target animals to rodenticides. To help to prevent accidents:

1. Store unused product out of reach of children and pets.
2. Apply product in bait stations for all outdoor placements.
3. Use tamper-resistant bait stations for all placements where children, pets, non-target mammals or birds may access bait. These stations must be resistant to destruction by dogs and by children under six (6) years of age, and must be used in a manner that prevents such children from reaching into bait compartments and obtaining bait. If bait can be shaken from bait stations when they are lifted, units must be secured or otherwise immobilized. Even stronger bait stations are needed in areas open to hooved livestock, raccoons, bears, or other potentially destructive animals, or in areas prone to vandalism.
4. Dispose of product container and unused, spoiled, or unconsumed bait as specified on this label.

Note: Bait stations are mandatory for outdoor, above ground use. Tamper-resistant bait stations must be used if children, pets, non-target mammals or birds may access the bait.

USE RESTRICTIONS: This product can only be used to control Norway rats, roof rats, and house mice *in and within* 100 feet of man-made structures constructed in a manner so as to be vulnerable to commensal rodent invasions and/or to harboring or attracting rodent infestations. Examples of such structures include homes and other permanent or temporary residences, food processing facilities, industrial and commercial buildings, trash receptacles, agricultural and public buildings, transport vehicles (ships, trains, aircraft), docks and port of terminal buildings and related structures around and associated with these sites. Fence and perimeter baiting, beyond 100 feet from a structure as defined above, is prohibited. This product must not be applied directly to food or feed crops. Burrow baiting with this product is prohibited.

Do not use this product in sewers. Do not place bait near to or inside of ventilation duct openings. Do not contaminate water, food, feedstuffs, food or feed handling equipment or milk or meat handling equipment or surfaces that come into direct contact with food. Do not broadcast bait. When used in USDA inspected facilities, this product must be applied in tamper resistant bait stations.

Do not sell this product in individual containers holding less than 16 pounds of bait.

SELECTION OF TREATMENT AREAS:

Determine areas where Norway rats, roof rats and house mice will most likely find and consume the bait. Generally, these areas are along walls, by gnawed openings, beside burrows, in corners and concealed places, between floors and walls, or in locations where these rats, mice, or their signs have been seen. Protect bait from rain and snow. Remove as much alternative food as possible.

APPLICATION DIRECTIONS:

Norway Rats and Roof Rats: Apply 3 to 10 blocks per placement, using tamper-resistant bait stations as required under **"IMPORTANT"**. Space placements at intervals of 15 to 30 feet in infested areas pertaining to structures. Maintain an uninterrupted supply of fresh bait for at least 10 days or until fresh signs of feeding by these rats cease to appear.

House Mice: Apply 1 block per placement, using tamper-resistant bait stations as required under **"IMPORTANT"**. Space placements at intervals of 8 to 12 feet in infested areas pertaining to structures. Larger placements, up to 2 blocks, may be used at points of extremely high mouse activity. Maintain an uninterrupted supply of fresh bait for at least 15 days or until fresh signs of feeding by these mice cease to appear.

FOLLOW UP: Replace contaminated or spoiled bait immediately. Wearing gloves, collect and properly dispose of dead animals and leftover bait, as well as any bait that has become accessible to non-target animals. To discourage re-infestation, limit sources of rodent food, water, and harborage as much as possible. If re-infestation does occur, repeat treatment. For continuous sources of infestation, set up permanent bait stations and replenish them as needed.

STORAGE AND DISPOSAL

Do not contaminate water, food or feed by storage or disposal.

STORAGE: Store only in original container in a cool, dry place inaccessible to children and pets. Keep containers closed and away from other chemicals.

PESTICIDE DISPOSAL: Wastes resulting from the use of this product may be placed in trash or delivered to an approved waste disposal facility.

CONTAINER HANDLING: Nonrefillable container. Do not reuse or refill this container. Offer for recycling or reconditioning; or puncture and dispose of in a sanitary landfill; or incineration.

PRECAUTIONARY STATEMENTS:

Hazards to Humans and Domestic Animals

CAUTION: Harmful if swallowed. Keep away from children, domestic animals and pets. All handlers (including applicators) must wear shoes plus socks, and gloves. Any person who retrieves carcasses or unused bait following application of this product must wear gloves.

User Safety Requirements: Follow manufacturer's instructions for cleaning/maintaining PPE. If no such instructions for washables, use detergent and hot water. Keep and wash PPE separately from other laundry. Remove PPE immediately after handling this product. Wash the outside of gloves before removing. As soon as possible, wash hands thoroughly after applying bait and before eating, drinking, chewing gum, using tobacco or using the toilet and change into clean clothing.

FIRST AID

Have label when obtaining treatment advice.

If swallowed:	<ul style="list-style-type: none"> •Call a poison control center or doctor immediately for treatment advice. •Have person sip glass of water if able to swallow. •Do not induce vomiting unless told to do so by the poison control center or doctor.
----------------------	--

Treatment for pet poisoning: If animal eats bait, call veterinarian at once.

Note to Physician or Veterinarian

Anticoagulant Difenacoum: If swallowed, this material may reduce the clotting ability of the blood and cause bleeding. **For Humans or Dogs** that have ingested this product and/or have obvious poisoning symptoms (bleeding or prolonged prothrombin times), give Vitamin K1 intramuscularly or orally. **For Dogs**, check prothrombin times every 3 days until values return to normal (up to 30 days). Blood transfusions may be needed.

ENVIRONMENTAL HAZARDS: This product is toxic to fish, birds and other wildlife. Dog and predatory and scavenging mammals and birds might be poisoned if they feed upon animals that have eaten bait. Do not apply this product directly to water or to areas where surface water is present or to intertidal areas below the mean high water mark.

NOTICE: Buyer assumes all risks of use, storage or handling of this product not in accordance with label directions.

Note: Seller warrants that this product complies with the specifications expressed in this label. To the extent consistent with applicable law, Seller makes no other warranties, and disclaims all other warranties, express or implied, including but not limited to warranties of merchantability and fitness for the intended purpose. To the extent consistent with applicable law, Seller's liability or default, breach or failure under this label shall be limited to the amount of the purchase price. To the extent consistent with applicable law, Seller shall have no liability for consequential damages.

Model Number: M2030
Part Number: 26248-2
Revision: 0513

EPA Reg. No. 36488-63
EPA Est. No. 47629-PA-01

Manufactured for:
Woodstream
Corporation
69 N. Locust Street
Lititz, PA 17543-0327
855-5-VICTOR
www.victorpest.com

